

EDEN-link

STRATEGIC SOLUTIONS AND RESOURCES



Mission-Statement

Eden-link is a Canadian non profit organization dedicated to humanitarian growth and development



ECO STRUCTURES

are engineered for missions and organizations that offer global support. There are several single, multiple and NEW town home style units. The steel sandwiched high-density foam panel technology has enormous strength and provides insulated protection from extreme heat or cold. They eliminate fungus, mould, mildew and damage from insects, termites and rodents. The prefab modular units are steel reinforced to withstand hurricanes, tornadoes and earthquake tremors. They can be supplied to your relief associates from approximately \$4,000 CDN per unit.



Vision

Originated in Sept 2011 to improve the living conditions by creating schools to educate the less fortunate around the globe by offering adequate facilities for those living in poverty conditions, it raises their personal dignity, comfort and community.

Existing Hazards

The danger with block, stone or stick built shelters is they collapse during extreme weather upheavals and could cause severe injuries and loss of life to the occupants.



Support

Simple A.B.C. instructions are included with all units to assist the local population understand the assembly of the prefab modular component.

Where necessary we could send a factory supervisor to train the site personnel. For large projects we can establish a temporary production and assembly facility.



"Happiness comes from serving others."
John 13:12-20

Objectives

The solution was to design and produce durable, low cost facilities for housing, schools and churches that will withstand the diverse weather conditions and other hazardous challenges pertaining to specific areas.



Eco Structures

Engineering custom designed for specific terrains and severe weather conditions. Steel reinforced to withstand and rated for hurricanes, tornadoes, and earthquake tremors.

Exclusive Advantages

Insulated panels have high density urethane foam sandwiched by two steel or concrete skins. The technical design adds greater strength and is reinforced by strategically placed steel channels and brackets.

Mildew, mold and fungus are eliminated for healthier conditions.

Durability prevents termites, insects and rodents from penetrating the material.

[Reduce Global Warming - Life Cycle Benefits of SIPs](#)
[LEED Green Building with SIPs](#)
[Validated Ecoefficiency Analysis](#)
[The Power of Technology](#)

The end result is a high quality home that could cost less than 50% of most conventional homes. Dossmade Eco Structure System Homes are proudly Canadian, offering a Twenty Year warranty for Quality & Workmanship. All components meet International Building Codes, Fire Rated, Green-Guard, EnergyStar, Eco-Friendly and are recyclable.



Benefits

Environmentally sustainable and recycle-able. Clean pre-finished surfaces for low maintenance. Eco Structures provide insulated protection from extreme cold and heat. In some countries where they have quality manufacturers, it could be advantageous for them to supply windows & doors. Where required, local manufactures may be used for kitchen & bathroom fixtures/furniture. Similarly, local plumbing & electrical trades will be required to complete the amenities.

Versatility

Lightweight panels can be handled by local workers, no heavy equipment needed. Easy tongue and groove assembly prevents drafts or water penetration. Prefab panels can be installed in approximately 48 hours. Units can be disassembled and moved to another location if necessary.

Shipping

The "Villager" style arch buildings can be loaded with as many as 35 units per container with a tentative cost of \$100.00 per unit. The modular single, double & quadruple units can be loaded with 1-2 units per container depending on the design. Delivery on initial orders could be 12 weeks until we get the quantities & site requirements. Subsequent orders could be scheduled for 8 week production. It should be requested at time of order if containers are expected to be delivered from port to site.

Site Requirements

Each site is required to prepare a 4" reinforced concrete slab for the base of the structure or a raised floor constructed from light weight steel joists and concrete post frame with insulated panel floors can be supplied.



Target Markets

- developing nations
- poverty challenged regions
- disaster torn communities
- upgrading existing shelters

Auxillary Markets

- affordable subdivision housing
- designer showcase homes
- schools, clinics & churches

Commercial Markets

- oil mining and forestry shelters
- government social expansions
- military accommodation



Modular Types

Guest House



Woodland



Birchmount



Cedar Ridge



Villager



Types of Facilities

- basic structure (Villager)
- modest housing 250-450 sq ft
- standard cottages and housing 600-1000 sq ft
- upgraded housing 1-2 storeys
- reinforced mesh, high density cement skins
- luxury housing 1-2 storeys elegant
- elegant interior/exterior finishes
- auxiliary transitional housing
- commercial structures, schools, clinics, churches, community centres, offices, warehouses

Note:

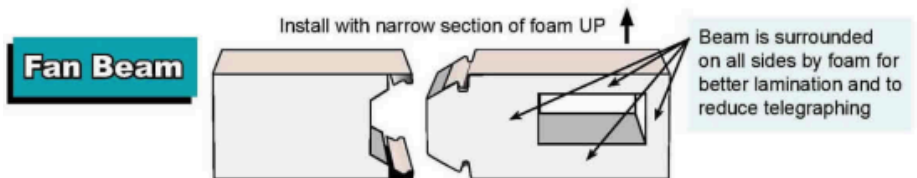
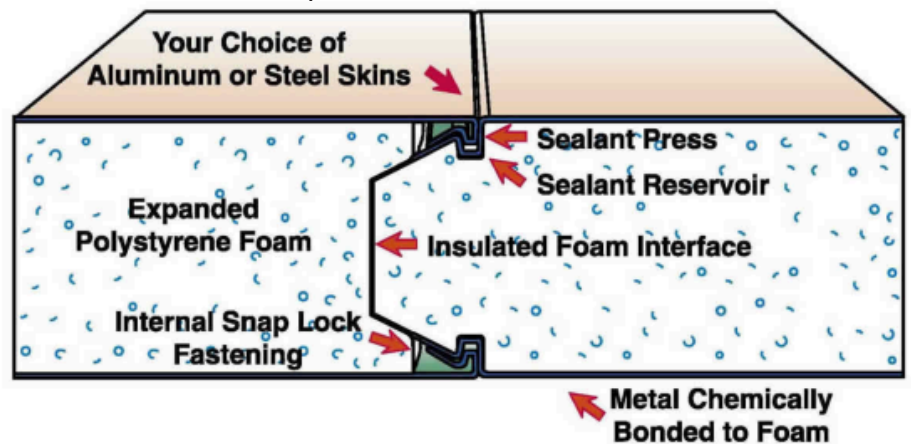
For engineer specifications please contact us directly

The Steel Insulated Panel

is comprised of metal skins that are rolled to form a unique, patented locking system that easily snaps together and an energy efficient continuous polystyrene foam core interface. Thier internal locking system eliminates the need for additional fastening methods at the joint. Sealant is encased in the joint, protecting it from ultraviolet destruction and forming a waterproof seal.

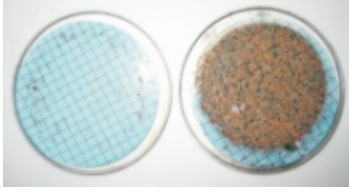
The panel adapts easily to a variety of floor plans and offers a wide range of design flexibility and usages including outdoor malls, restaurants, in-plant offices, small or large scale freestanding units, canopies and single or multi-family homes. Available 2" - 8" thick and up to 32' in length.

sample of modular construction



Growth Services

- **water sanitation filters**
www.sapwii.org

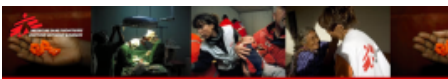


- **education and instructors**
www.travellersworldwide.com



- **medical leaders** – Doctors Without Borders
www.msf.ca

Today, MSF is one of the world's leading independent international medical relief organizations, working in around 80 countries worldwide and with operational centres and national offices in 19 countries.



- **spiritual leaders** – Overland Missions
www.overlandmissions.com
Rural Pastors Network



- **agriculture and livestock**
Alternative Food Production – PDF



- **fish farms** – United Food Technologies
www.uftag.de



- **poultry farms**
www.sciencedaily.com
Bird-Flu Resistant Chickens



- **light industry and distribution**
10,000 Villages – Fair Trade



Getting Involved

This opportunity is ideal for any group interested in helping develop communities around the world:

Sponsorship

Humanitarian foundations

Philanthropic individuals

Compassionate organizations

Charitable groups

Religious mission and outreach

Government housing agencies



Humanitarian Groups

- United Nations Global Market
- Salvation Army
- Central Mennonite Committee
- First Nations Aboriginal Communities
- Christian Reform World Relief Committee
- Habitat For Humanity
- + 18 other humanitarian organizations

Get Involved

As a Canadian not-for-profit organization your involvement is always appreciated.

CALL 905-954-5062 or email info@eden-link.org about getting involved.

Next Steps

- Email country location and terrain site accessibility.
- Forward sketches with dimensions and desired amenities.
 - *You will receive a proposed engineered drawings from the information provided*
 - *Your quote will include all details listed as discussed*
 - *An official signature will be required to approve the program prior to manufacturing*
- Let us know the date required for site.
- Will a temporary training supervisor be required?
- Advise us of sponsorship or payment method.