

SOLAR PANELS

360 W - Total Power
24% Efficiency
25 Years Warranty

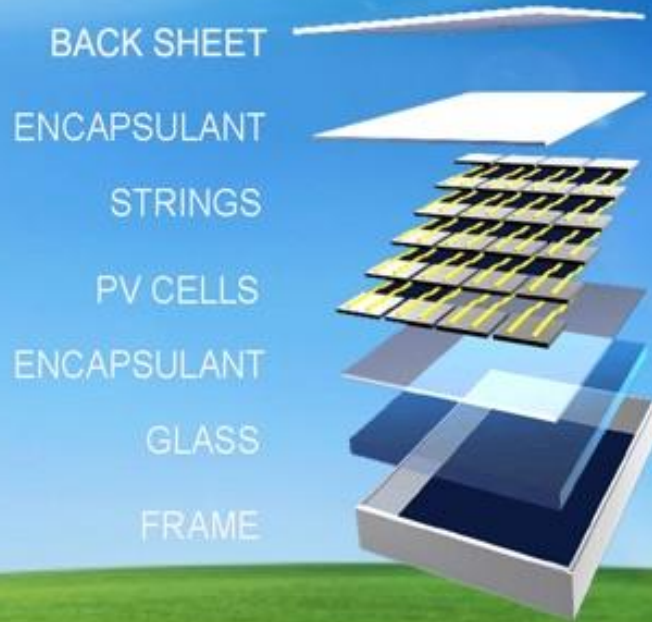


... and SQUEEGEE -
Programmable
Cleaning System

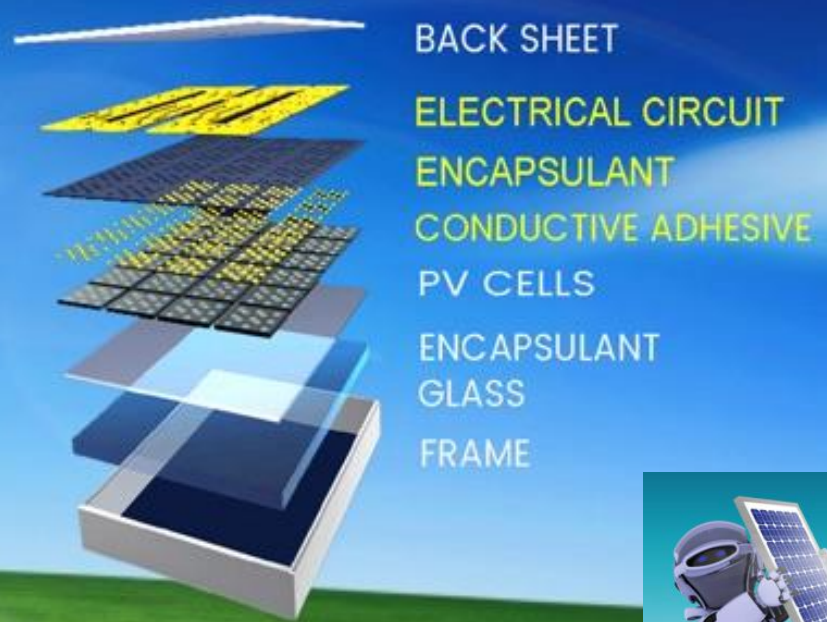
BACK CONTACT MODULE

Solar Panels

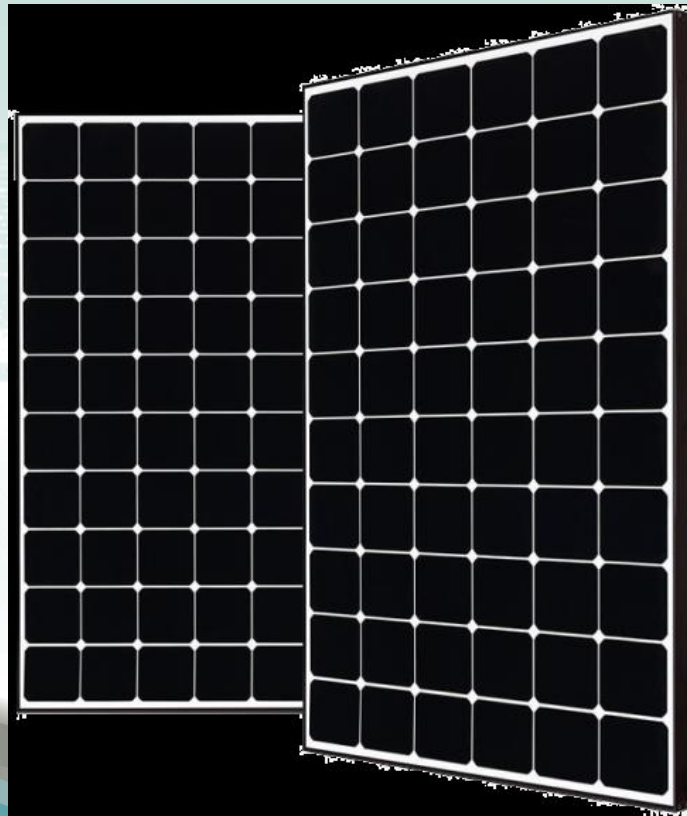
TRADITIONAL H-PATTERN MODULE



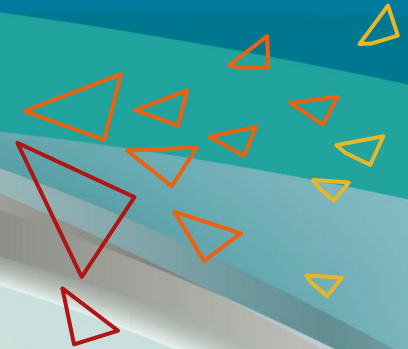
BACK CONTACT MODULE



PV-BACK CONTACT SOLAR PANELS

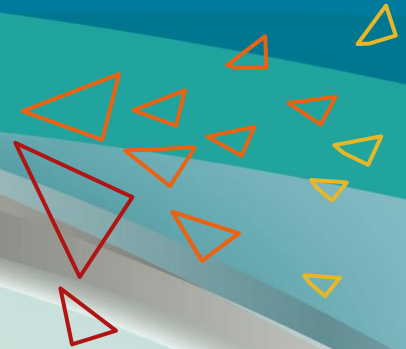


Black Silicon Cell
(Made in Germany)



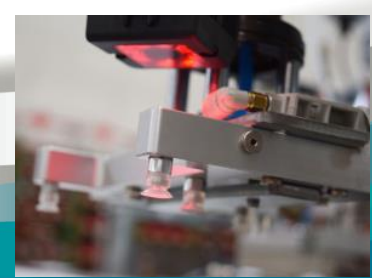
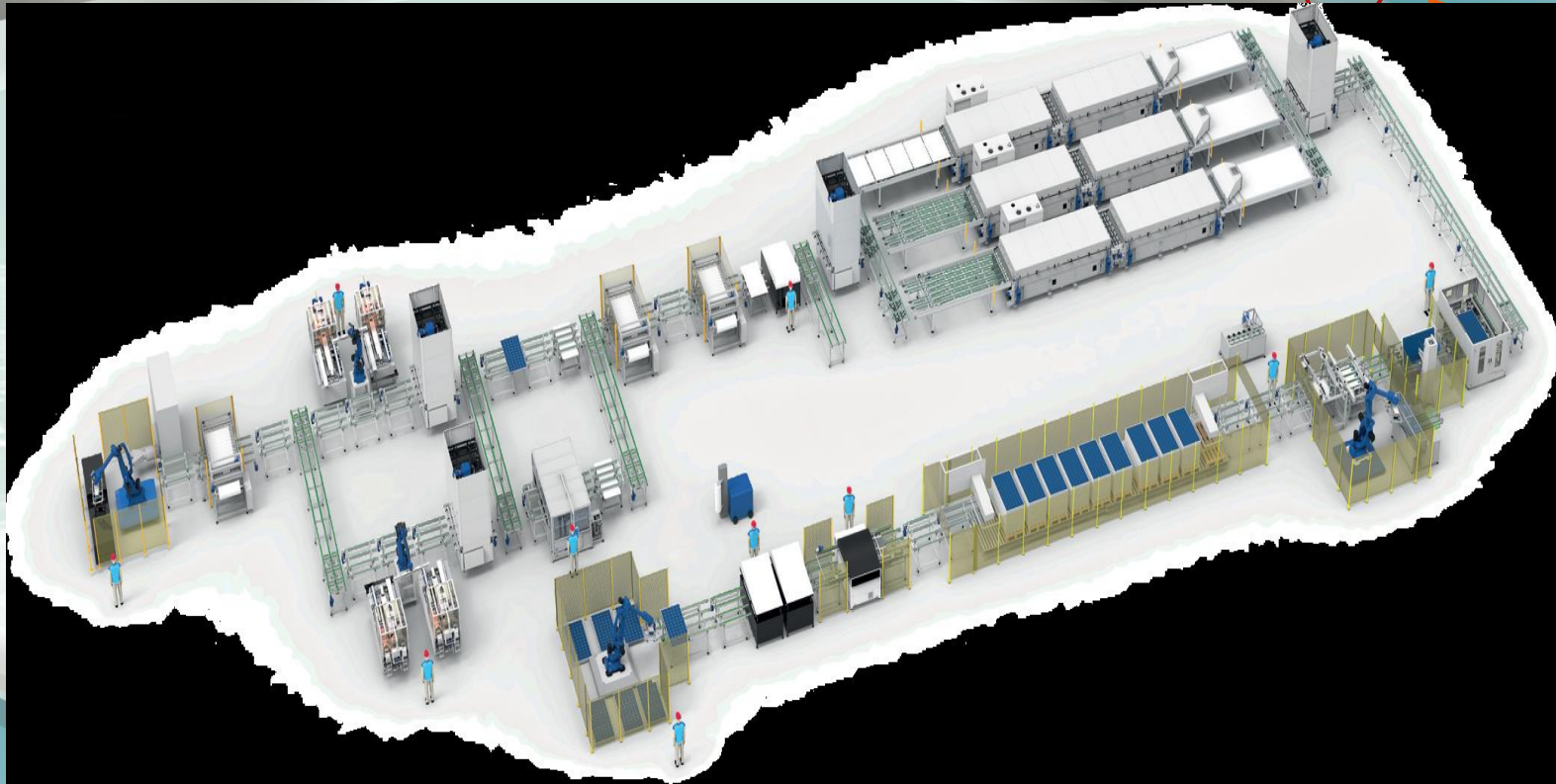
KEY BENEFITS OF PV-BACK CONTACT MODULE PRODUCTION

- Fully automation concept based on accurate robot assembly operations
- Flexible set-up for different panel sizes up to 1000 X 2000 mm
- High capacity from small factory floor space
- Intelligent line management software with traceability system
- Lower system level project cost per Wp
- Better output/m² (less land cost)
- Less cabling, rack, inverter and project cost
- **HIGHER AVERAGE OUTPUT**
- Offers 360 Wp vs. 240 Wp (traditional pattern)
- 24% efficiency vs. only 18% with traditional solar panels
- Patented technology connectivity
- Standard dimensions
- 25 years Warranty



MODULE PRODUCTION LINE

Fully automatic state of the art production line





High Efficiency High Quality Solar Panels :

- 25 years Warranty ,
- **24% Efficiency,**
- Individual Cleaning Frame,
- **Faze Logic Technology**
- Back Contact Technology,
- **Dark Silicone Cells.**



299 Fincham Ave.
Markham, ON L3P 4E8
e-mail: office@etronenergy.com
www.etronenergy.com